

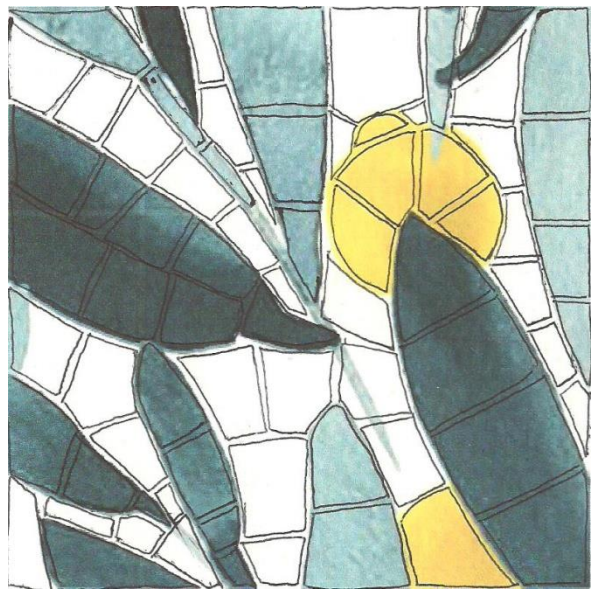
## Templates

For each design (a) the 'Andamento' (layout) had been already drawn (b). It shows for a better understanding how the design will look when its translate in mosaic. It's a guide ( not mandatory) to help you during the mosaic making process and also to help you to decide which design you would like to pick.

If you are not sure which one will suit your mosaic skill level, don't worry. At the beginning of the workshop we can talk and I will help you to go through this decision.

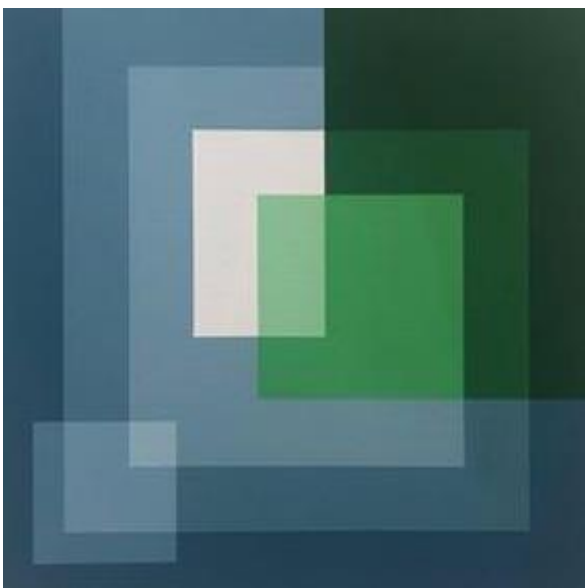


1a

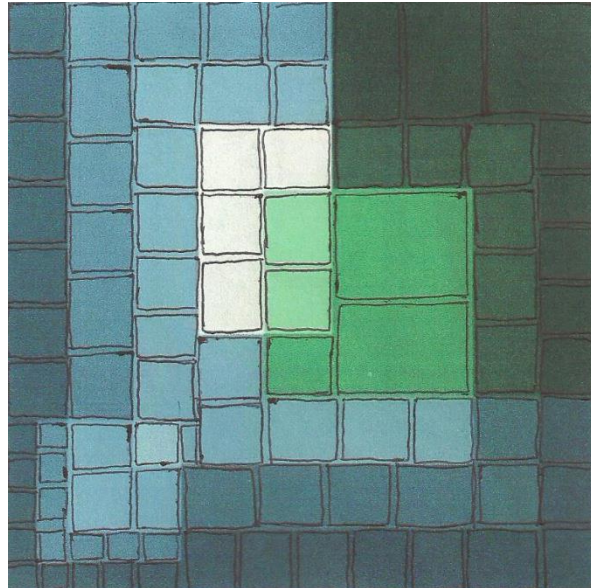


1b

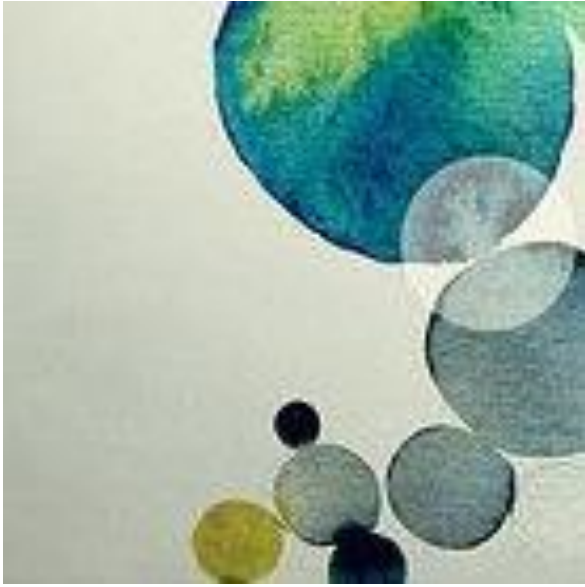
(for experienced)



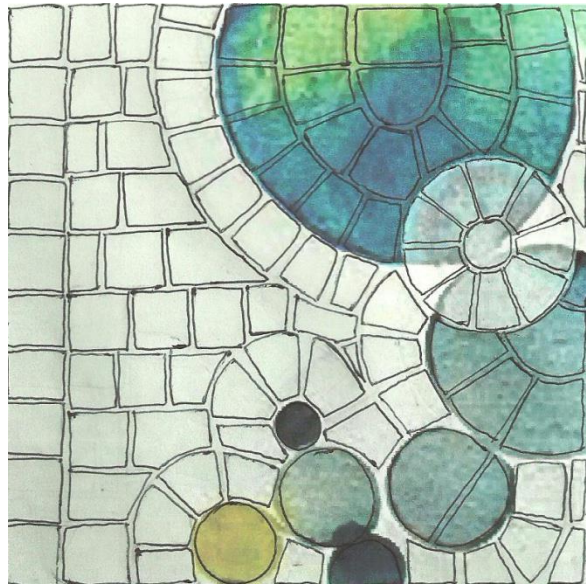
2a



2b



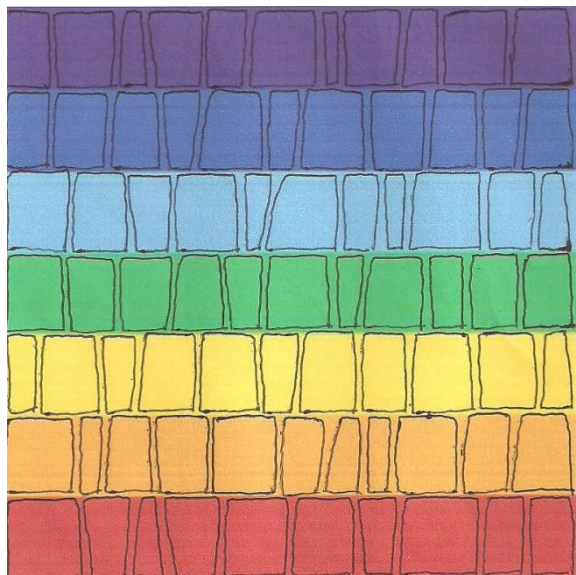
3a



3b



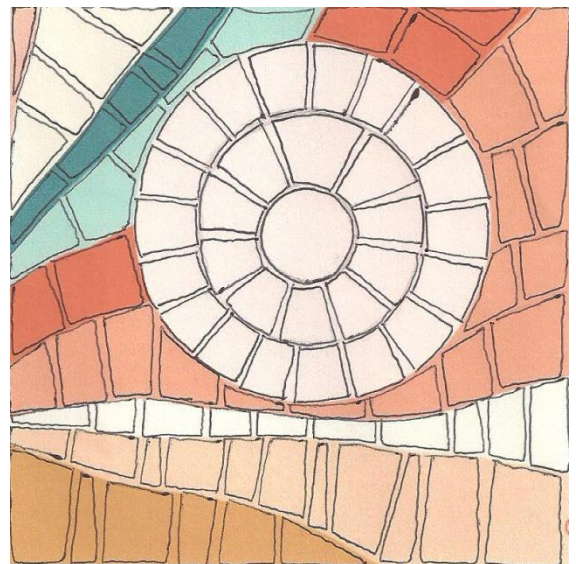
4a



4b



5a

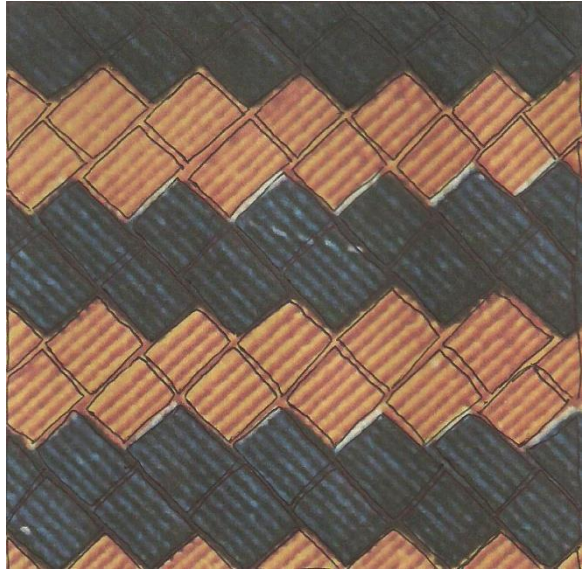


5b





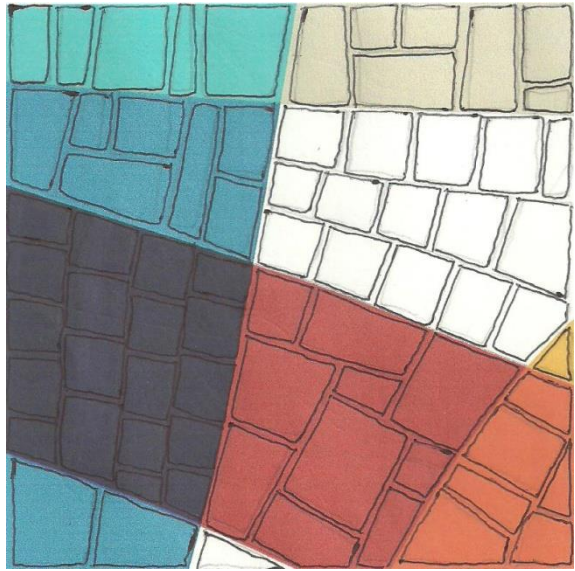
6a



6b



7a



7b